

KMini - KVM IP Smart Extender

A Miniature KVM IP Extender Allowing to Build Non-Blocking Matrix KVM Switches



Small but Powerful. KMini is a new secure IP KVM extender to access remote computers or servers with total security and convenience. Kmini provides the highest level of security and features that can be applied to modern IP KVM switches. With KMini you can work or carry out maintenance operations from any location in the world over the Internet, or from any office of your company over your LAN. Thanks to its very small size and its limited cost, each computer can be controlled by a KMini. It does not take up space and can be put anywhere next to the computer.

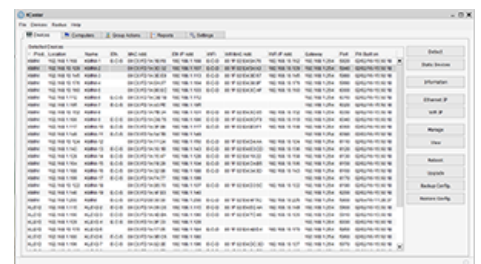
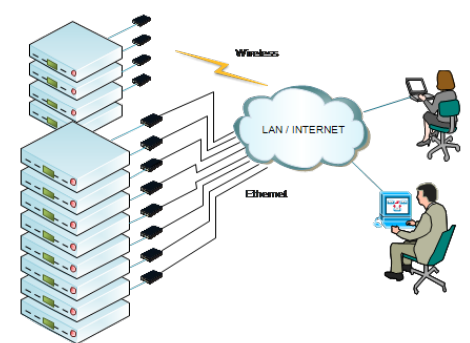
Leverage the Network Infrastructure. KMini does not need any specific wiring. It uses the existing network infrastructure and is not bandwidth hungry.

Wireless Connection. If needed, using a minuscule USB adapter, KMini can communicate via a wireless connection instead of (or in parallel with) the Ethernet cable.

Free Management Software. An unlimited set of KMinis can be managed with KCenter. KCenter is free management software that centralizes commands, logs and alarms to and from all devices. It can run on almost all platforms. With KCenter the KMinis are just like a single distributed KVM. This solution provides many advantages over the conventional IP KVM switches.

Perfect Matrix KVM Switch. A set of KMinis achieves a perfect matrix KVM switch. The access to computers are non-blocking. There is no limit to the number of concurrent users and no blocking possibility.

High Reliability. Safety is improved because a possibly defective KMini can be replaced in a few minutes without shutting down the computer. There is no common electronic part like power supply which can put all connected servers out of reach in case of failure. KMini can be powered by the USB port in most cases. So most of time there is no power adapter.



More Flexibility. Unlike classic KVM switches, you buy and use only the number of ports you need. Who exactly needs 32 or 16 ports? If required, you can endlessly expand your decentralized KVM switch at low cost and without requiring additional space in your rack.

Digital and Analog Video. Unlike conventional KVM switches that only support one type of video, KMini supports digital DVI / HDMI and analog VGA videos. You do not have to worry about the type of video provided by the computer. The video resolution can be high: 1600x1200 in VGA and 2048x1152 in DVI / HDMI.

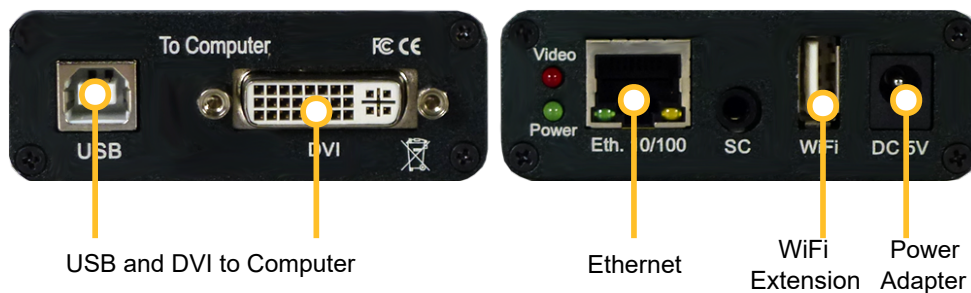
Fast Mouse. The mouse is accurate and quick. The Absolute mode eliminates the possibility of loss of synchronization between local and remote mice.

Several Viewers. The viewers for Windows, Java, and Android allow working on almost all environments.

Virtual Media Feature. KMini can emulate a USB mass storage device. Thanks to this feature you can have a local DVD, USB key or ISO file looking like if they were directly connected to the computer under control. This is called Virtual Media feature and it can be used to transfer data or install programs on the connected computer.

Specifications

| | |
|---------------------------------|---|
| Supported Video Modes | VGA (max 1600x1200@60Hz) and DVI (max 2048x1152@60Hz) DVI connections must use standard DVI cables HDMI connections are possible with HDMI-DVI adapters or cables VGA connections are possible with VGA / DVI-A adapters or cables |
| Computer Port Connectors | DVI-I (DVI+VGA) USB type B (composite device) |
| Ethernet Interface | RJ-45 connector, 10/100 BASE-T connection with auto-sensing. |
| WiFi Interface | By plugging the EDIMAX EW-7811Un USB adapter to the dedicated USB extension port. Connection to WPA/WPA2 (preferred) or WEP networks. |
| Remote Mouse | Relative or Absolute modes. In absolute mode the local and remote mice cannot be desynchronized. |
| Viewers | Windows viewer / JAVA viewer / Android viewer. Windows and Java viewers are free. The Android viewer must be bought on Android Play Store. |
| Settings | With KCenter or with any modern browser via HTTPS secure connection |
| Security | SSL/TLS, Encryption with 256-bit ephemeral keys User/server authentication based on passwords and PKI certificates |
| Power supply | Powered by the USB port (800mA max). If the USB port cannot provide this current, KMini can be powered by an external power adapter DC 5V 1A. In this case it takes no current from the USB port. |
| Temperatures | Operation: 0 to 50°C; Storage: -20 to 60°C |
| Humidity | 0 to 90%, non-condensing |
| Housing | Aluminum, black. |
| Dimension (LxWxH) | 10.5 x 7 x 2.5 cm |
| Weight | 160 g |
| Safety / EMI | FCC, CE |



Purchase Number: **KMini-25-01**